

DIN-96DI

Termination Board with 96-CH Opto-Isolated Digital Inputs

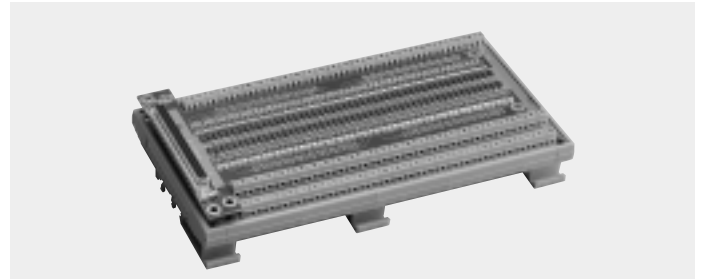
Features

- 96 Opto-Isolated digital input channels
- For use with PCI-7396
- AC or DC polarity-free DI
- Screw terminals for easy field wiring

Specifications

- Numbers of channel: 96
- Opto-isolator: PC3H4
- Input impedance: 4.7K Ohms
- Input voltage range: 0~24VDC
Input voltage threshold
 - 20V_{DC} for external 24V input
 - 8.8V_{DC} for external 12V input
 - 1.8V_{DC} for external 5V input
- Isolation voltage: 2,500 Vdc channel-to-ground

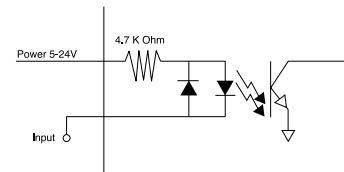
- Connector: 100-Pin SCSI-type
- Dimension: 112.7 mm x 225 mm
- Operating temp.: 0° ~ 60°C
- Storage temp.: -20° ~ 80°C
- Humidity: 5~95%, non-condensing
- Power consumption
 - 5V: 48mA(max.) from SCSI cable
 - External digital input current:
 - √ 24V: 490mA(max.)
 - √ 12V: 250mA(max.)
 - √ 5V: 102mA(max.)



Ordering Information

DIN-96DI

96 Channel Isolated Digital Input Terminal Board
(includes 1m ACL-105100-1)



DIN-96DO

Termination Board with 96-CH Opto-Isolated Digital Outputs

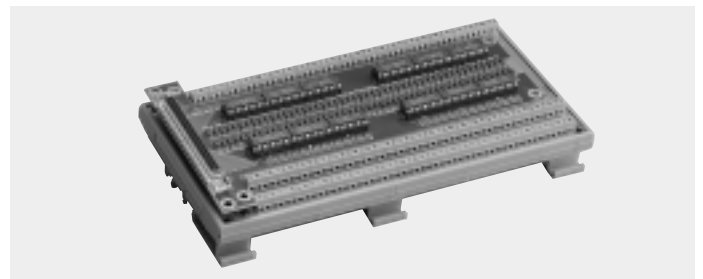
Features

- 96 Opto-Isolated digital output channels
- For use with PCI-7396
- On-board relay driver circuitry
- Screw terminals for easy field wiring

Specifications

- Numbers of channel: 96
- Opto-isolator: PC3H7
- Output type: Darlington transistors, open collector up to 35Vdc
- Sink current
 - 350mA max. @ 100% duty, one of transistors device ON
 - 370mA @ duty 10% for all transistors devices ON
 - 140mA @ duty 50% for all transistors devices ON
 - 60mA @ duty 100% for all transistors devices ON

- Isolation voltage: 2500 Vrms
- Dimensions: 112.7 mm x 225.0 mm
- Operating temp.: 0°C ~ 60°C
- Storage temp.: -20° ~ 80°C
- Power consumption
 - 5V: 102mA(max.) from cable



Ordering Information

DIN-96DO

96 Channel Isolated Digital Input Terminal Board (includes 1m ACL-105100-1)

