

☆ FASHION ☆ FAST ☆ FUNNY ☆ EASY ☆
★ MOVE DRAB INTO DAZZLIN ★
☆ RHINESTONE APPLICATOR ☆

The Package Contains:

- 1 Applicator wand, 1 support stand, and
6 hot-fix tips: 2mm, 3mm, 4mm, 5mm, 6mm & 7mm.

How to using the Rhinestone Applicator :

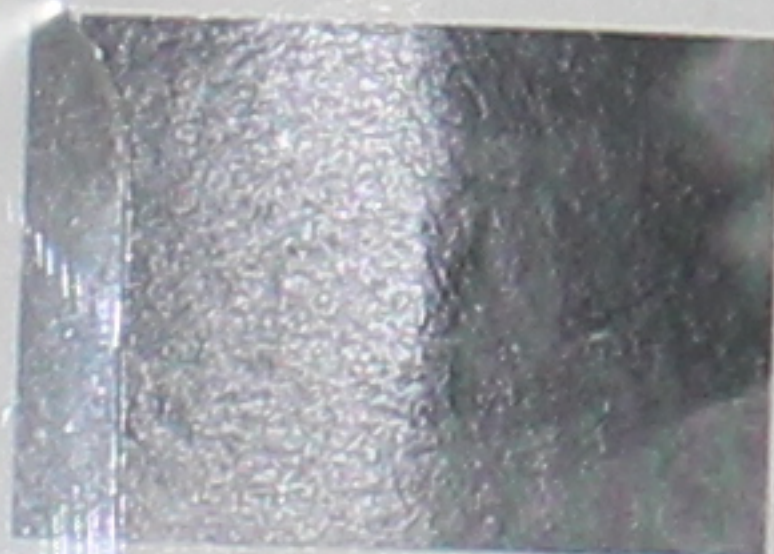
1. Choose the correct size attachment tip for the items you have selected..
2. With the Rhinestone Applicator unplugged, screw the selected tip clockwise into the applicator.
3. Plug the applicator into a power outlet and preheat (about 4minutes)



4. Lightly place the tip straight down onto the item and pick up the item.



5. Turn the wand upright. wait for the glue to get shiny and start to bubble (about 10 seconds)



6. Place tip straight down. Touch to attach the item onto the surface to be decorated. Lift straight up, the item is now attached.

For nailheads and items that do not fit into an applicator tip.

1. Place the item glue side down into the desired design on the surface to be decorated.
2. Use the appropriate flat head tip to apply heat and light pressure for 10-15 seconds.
3. If the item appears loose, repeat the process.

WARNING : Use only in ventilated areas. Use caution- the entire metal shaft gets hot. If used improperly the Rhinestone Applicator can cause burns to both user and surrounding work area. To avoid burns, The applicator must cool completely before changing applicator tips. Do not use near water and do not use if the cord becomes frayed - both may cause shock.

**** KEEP OUT OF REACH OF CHILDREN, NOT RECOMMENDED FOR CHILDREN WITHOUT ADULT SUPERVISION. ****



RoHS
conform

