

Type BLR-I-304

Fuse Block - Indicating

4 Pole – Regular Auto Blade



www.optifuse.com

(619) 593-5050

Specifications:

Max Current Rating: 30A per Circuit - 100A Max Input

Fuse Type: Regular Auto Blade - APR

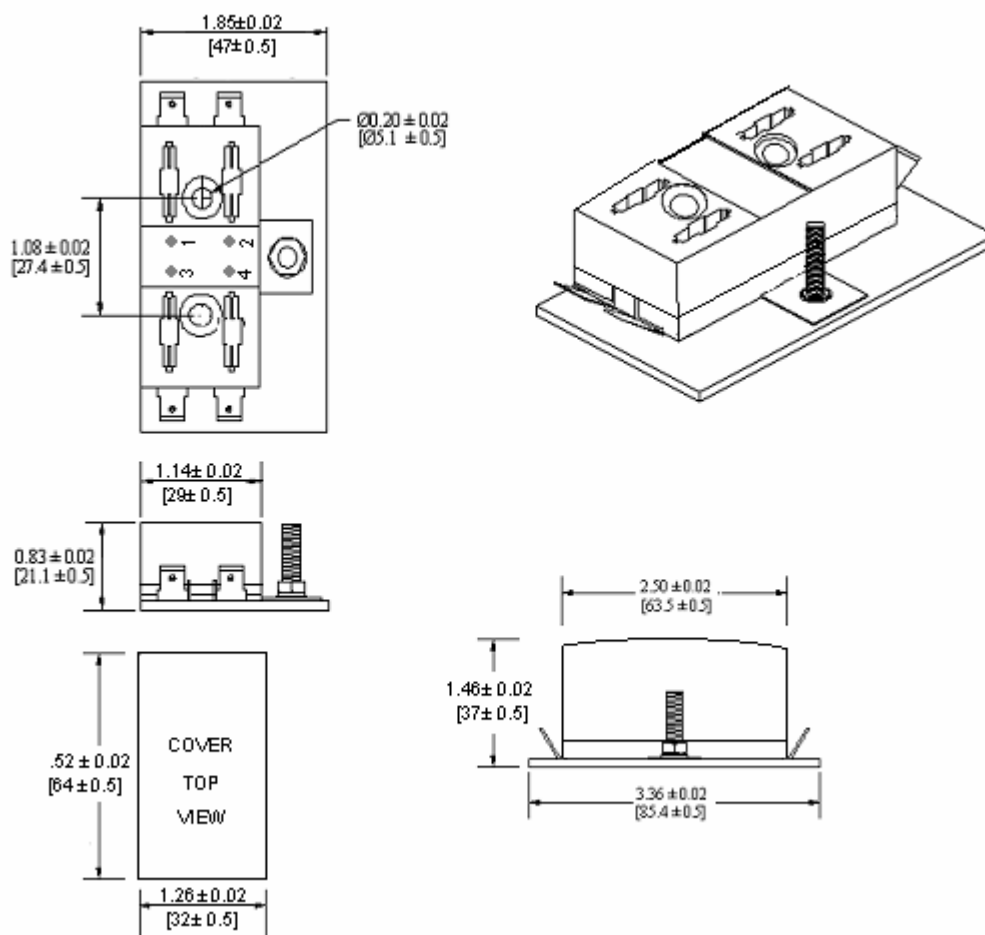
Base: Black Thermoplastic UL-Rated 94-V0

Cover: Opaque Lexan

Terminals: Steel, Tin plated 0.250" Quick Connect Terminals

Indicating LED - Red

Mechanical Dimensions: Inches [mm]



Warning:



-Operation beyond the specified maximum ratings or improper use may result in damage and possible electrical arcing and/or flame.

-Avoid contact of device with chemical solvent. Prolonged contact may damage the device performance.