

Type BLR-I-306

Fuse Block - Indicating

6 Pole – Regular Auto Blade

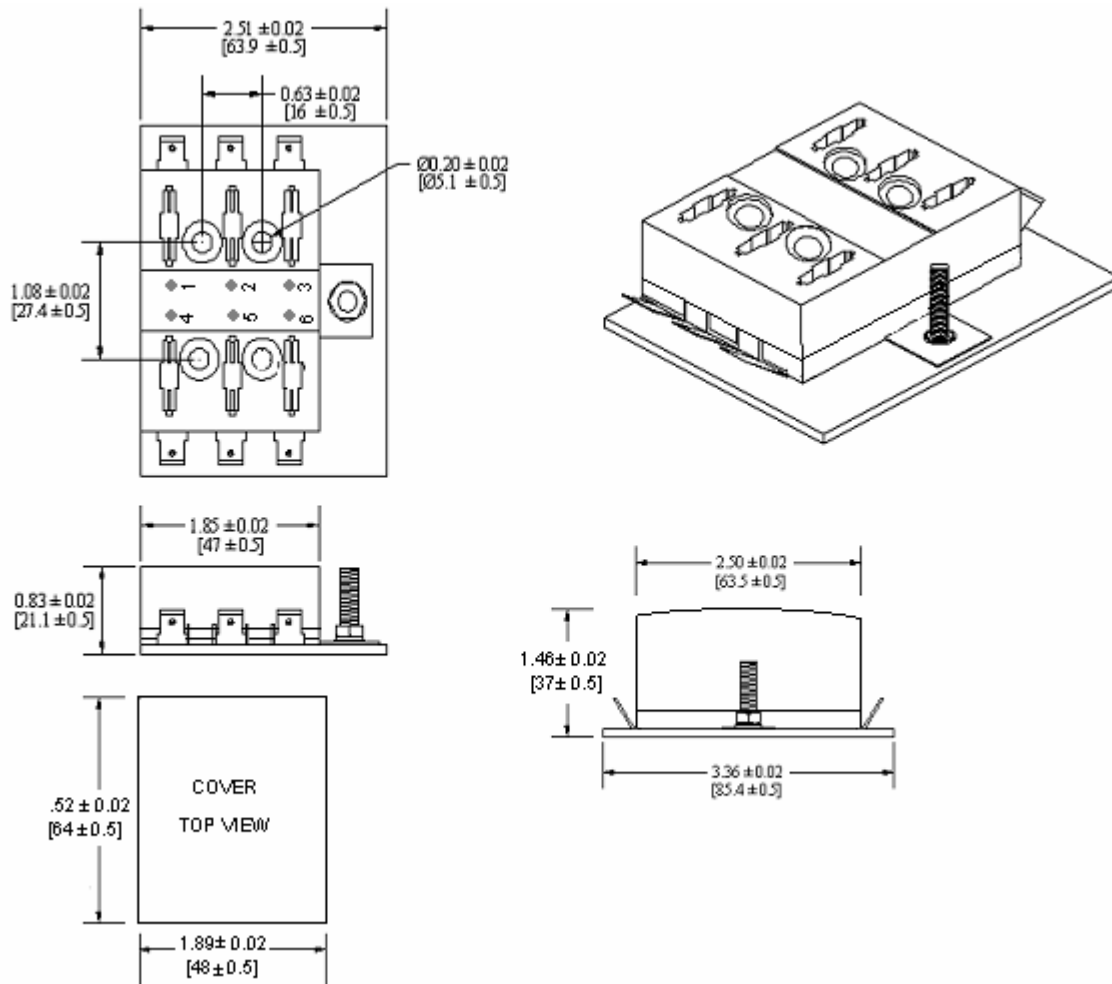


www.optifuse.com (619) 593-5050

Specifications:

- Max Current Rating:** 30A per Circuit - 100A Max Input
- Fuse Type:** Regular Auto Blade - APR
- Base:** Black Thermoplastic UL-Rated 94-V0
- Cover:** Opaque Lexan
- Terminals:** Steel, Tin plated 0.250" Quick Connect Terminals
- Indicating LED - Red**

Mechanical Dimensions: Inches [mm]



	<p>Warning: -Operation beyond the specified maximum ratings or improper use may result in damage and possible electrical arcing and/or flame.</p>
	<p>-Avoid contact of device with chemical solvent. Prolonged contact may damage the device performance.</p>