

DPS Software user manual

☆Software installation instructions

☆Software user manual

1.1 DPS Software installation

1.1.1 DPS Software installation steps

1、Run the Setup folder DPS_Setup. Exe (please install.net before installing software and equipment The driver)

2、Click next to start the installation, as shown in figure 1 ;



figure 1

3、Browse Choose the installation path, and then click next to continue the installation, as shown in figure 2;



figure 2

4、According to the need to select the shortcut check box, click next to continue the installation, as shown in figure 3;



figure 3

5、According to the need to select the icon on the desktop shortcut check box and click next to continue the installation, as shown in figure 4;



figure 4

6、According to the need to select the icon on the desktop shortcut check box and click next to continue the installation, as shown in figure 4 click install to install the software, as shown in figure 5;

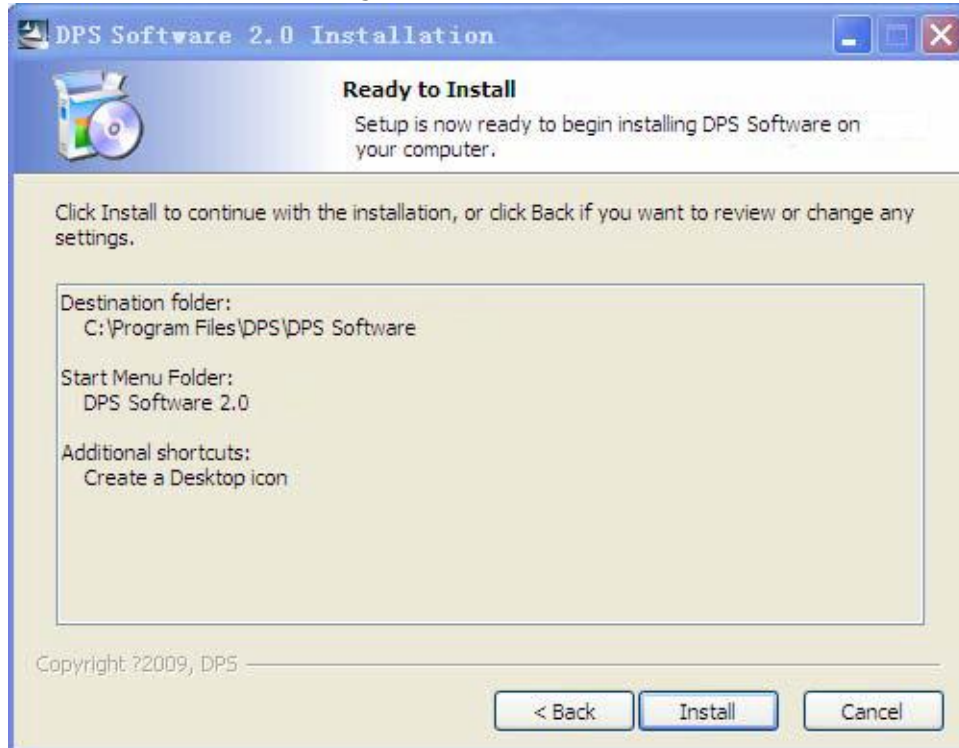


figure 5

7、Waiting for the installation, as shown in figure 6;

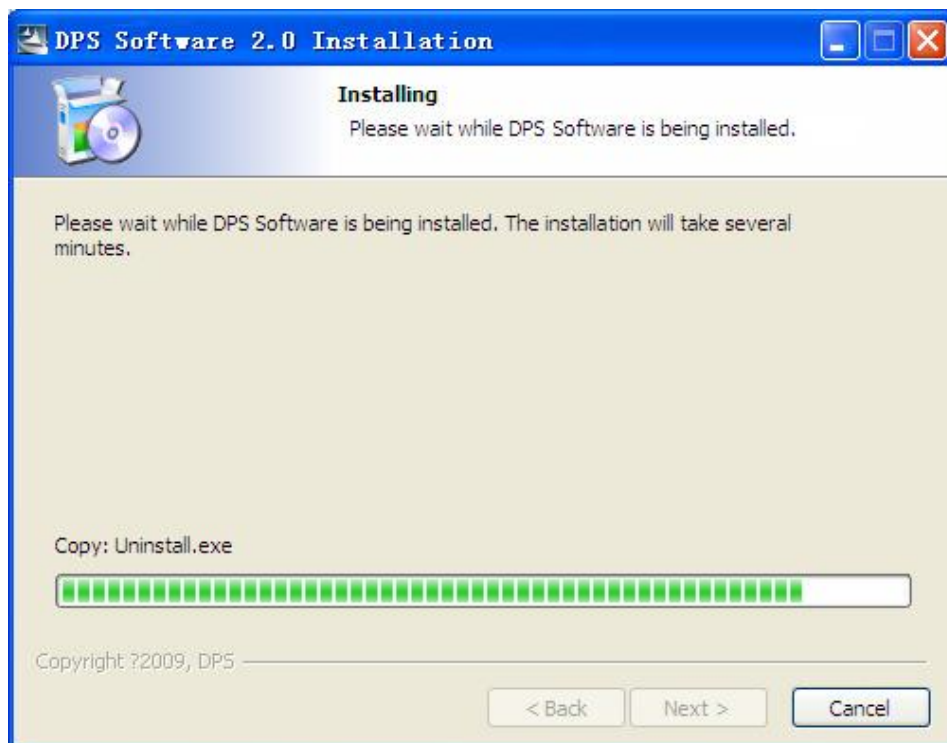


figure 6

8、Click finish to end installation, as shown in figure 7;



figure 7

1.1.2 After the DPS software installation is successful, will create a shortcut on the desktop

1、Generate the desktop shortcut icon, as shown in figure 8;



figure 8

2、Generated under the start menu shortcuts, as shown in figure 9;



figure 9

1.1.3 DPS Software uninstall:

1、 Click the start menu under unloading, as shown in figure 10.

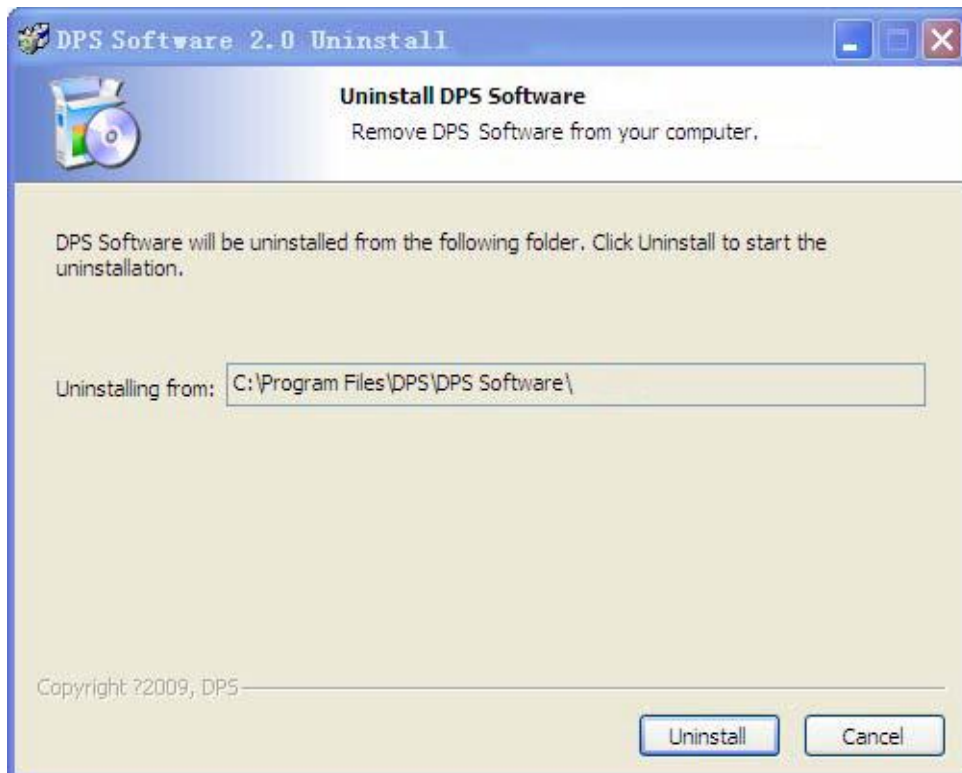


figure 10

2、 Waiting for the uninstallation completes, as shown in figure 11;

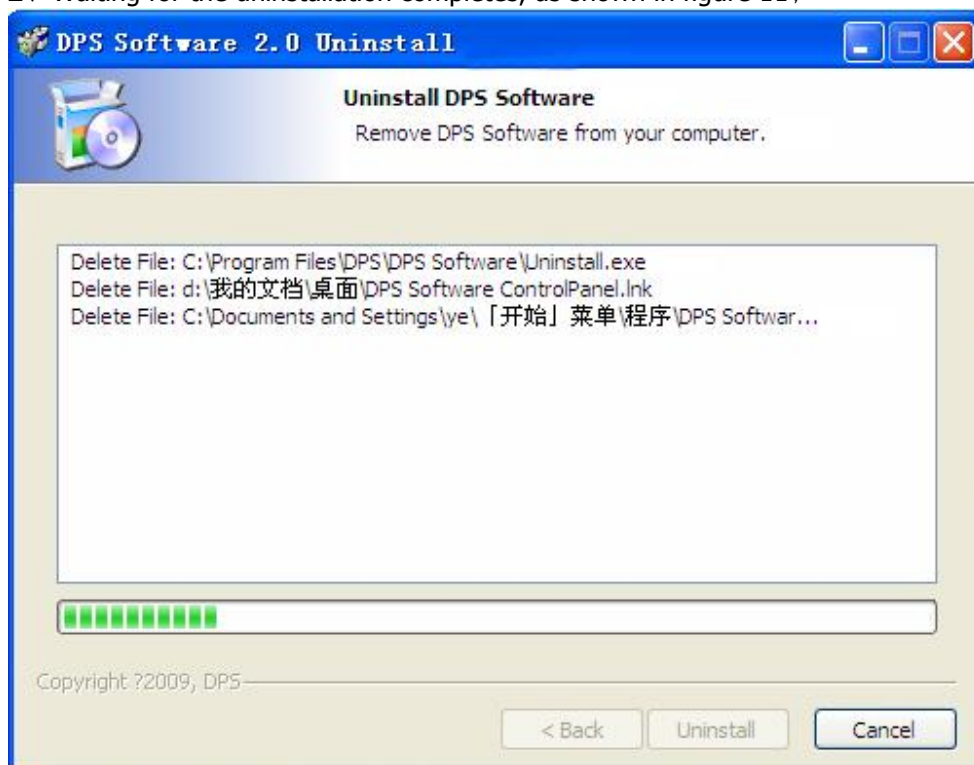


figure 11

3、Click finish to end software uninstall, as shown in figure 12;

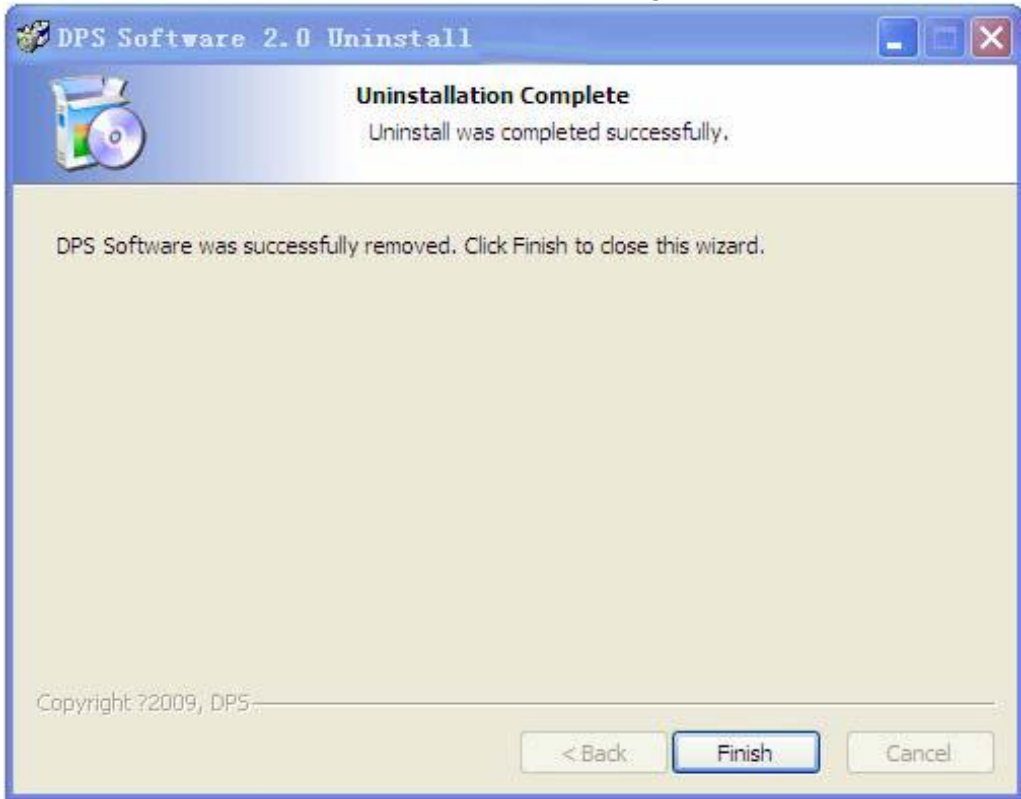


figure 12

2.1 DPS software use

2.1.1 DPS Software control interface use

1、Open the software, before connected to the machine communication , as shown in figure 13;



figure 13

2、Click the Connect to contact the machine , as shown in figure 14;

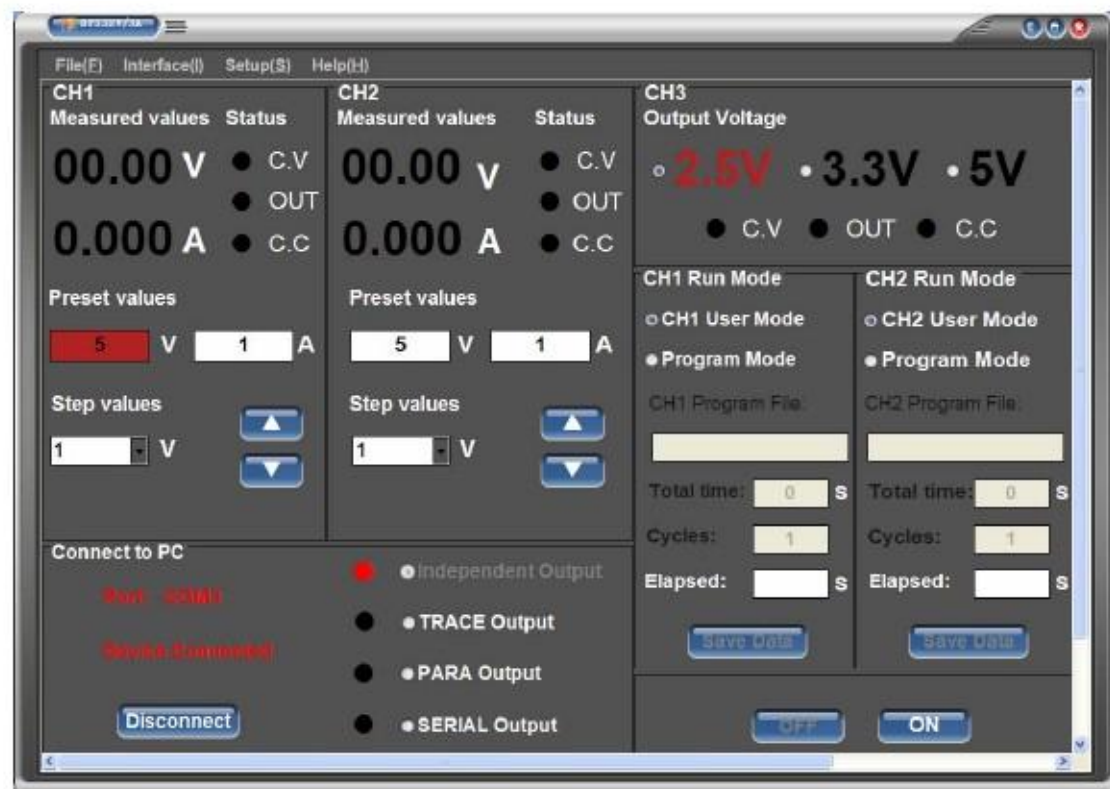
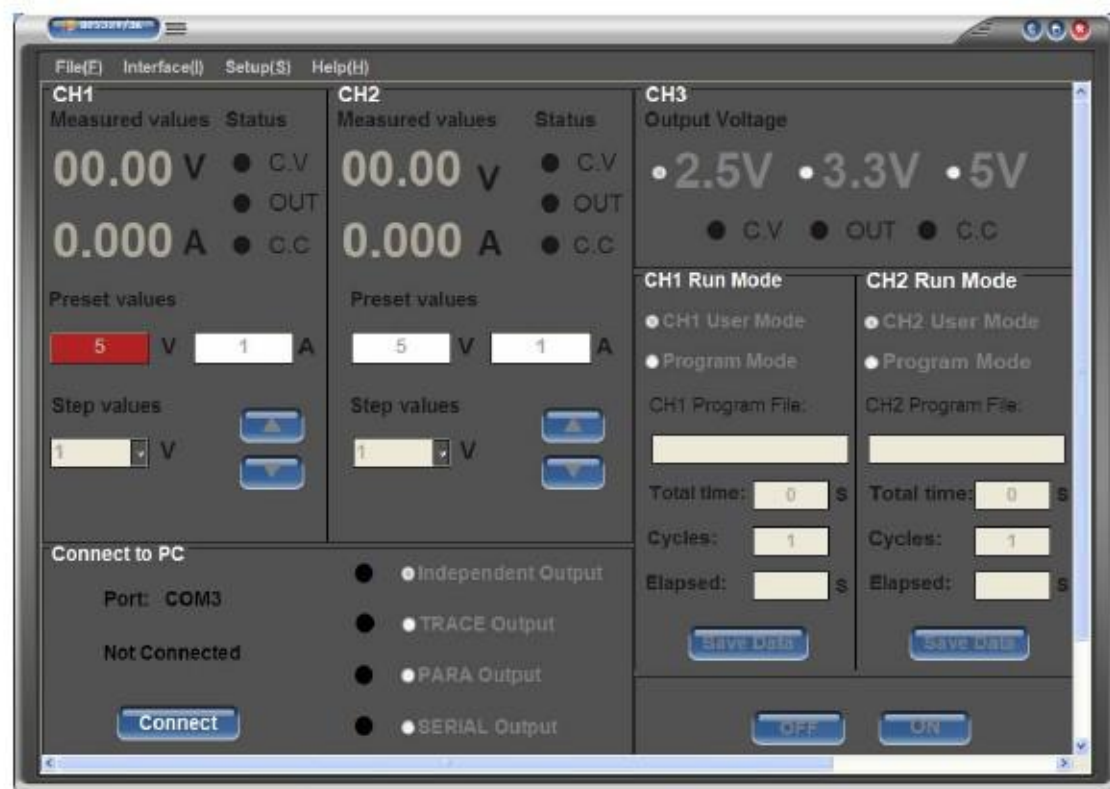


figure 14

3、Click Disconnect , Disconnect the machine communication, as shown in figure 15.figure 15



4、Menu instructions, as shown in figure 16 to 20;



figure 16
Exit software



figure 17
Interface to select



figure 18
Language choice



figure 19
Help selection



figure 20
Output mode selection

5、 Use the control panel, as shown in figure 21-23;

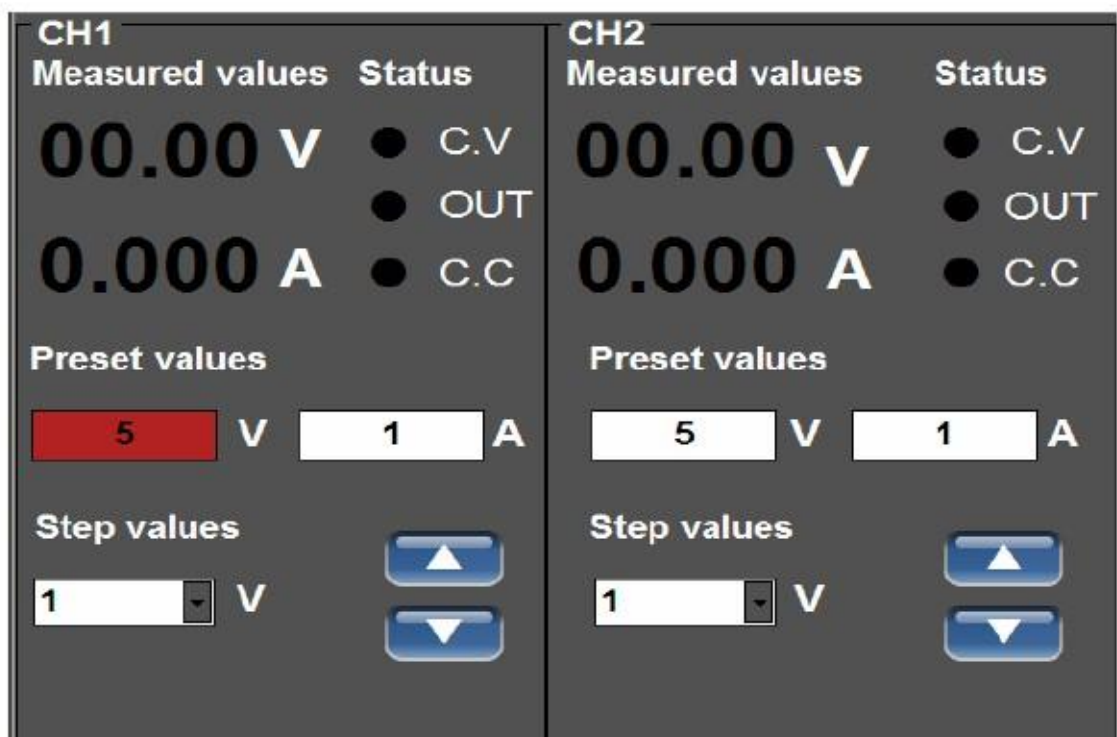


figure 21

CH1 Channel control panel

figure 22

CH2 Channel control panel



figure 23

CH3 Channel control panel

- CH3 Channel output is fixed, click select output voltage.
- Scroll the mouse ball adjusting the preset voltage, current value (mouse click default input box, corresponding to the input, A red box, and then roll the mouse ball can regulate the preset value, the default step value is 1 v voltage, Current is 0.1 A).
- Click the button to increase or decrease is also adjustable preset voltage, current value (mouse click default input box, and the corresponding A red input box, choose according to need to step value (as shown in figure 24), and then click the button to increase or decrease (such as shown in figure 25), can adjust the default value)

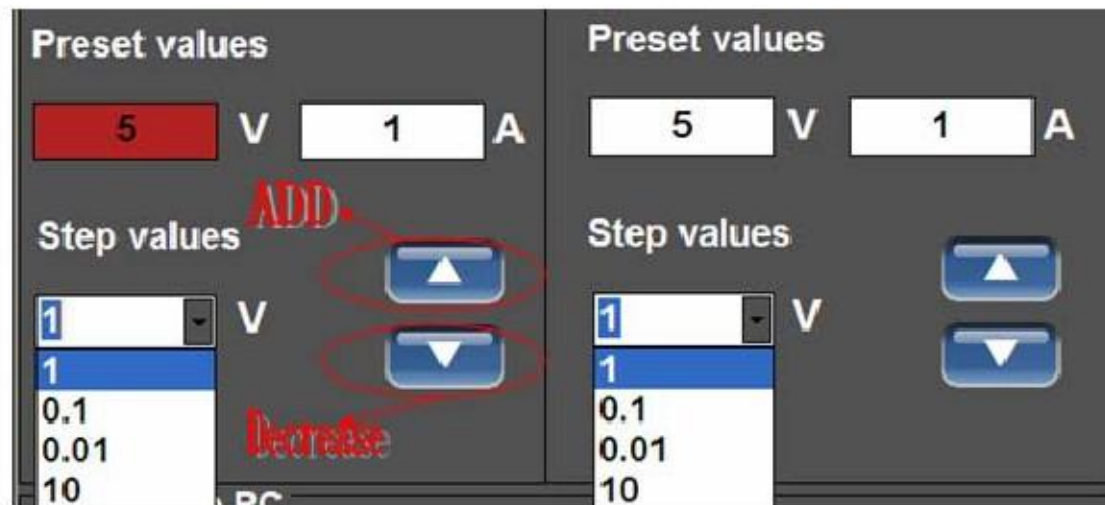


figure 24

step value

figure 25

Button to increase or decrease

- Click ON button to output the current default values, as shown in figure 26

;

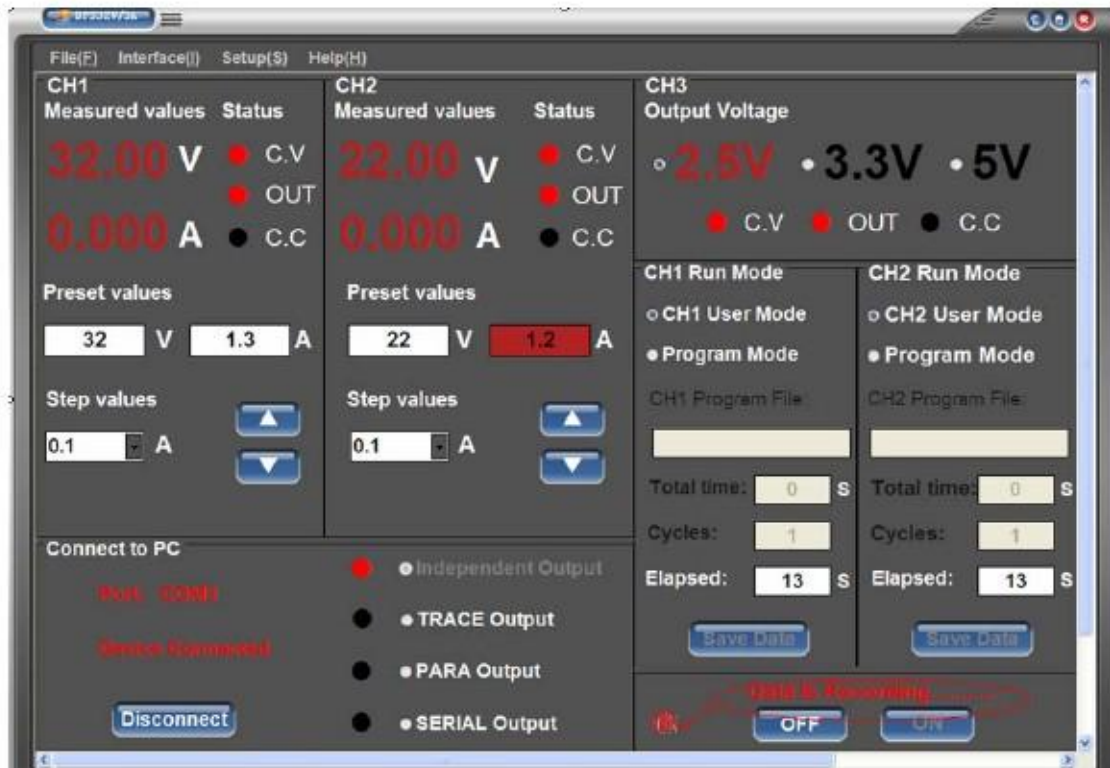


figure 26

- Click the OFF button to close the current output, as shown in figure 27;

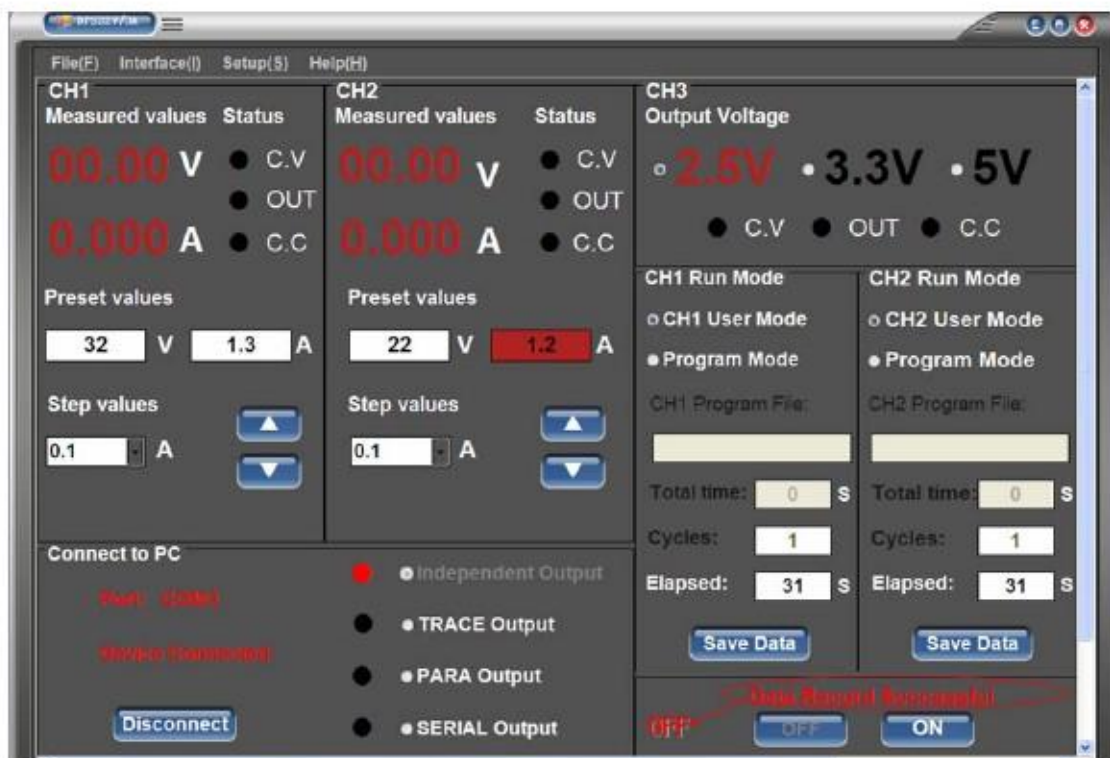


figure 27

- Click the Save Data button can be preserved in output shut down or output after the completion of the output change Data, such as
As shown in figure 28-29
;



figure 28
Save the CH1 channel running data



figure 29
Save the CH2 channel running data

6、CH1 and CH2 channel output mode choice, as shown in figure 30 to 33
;

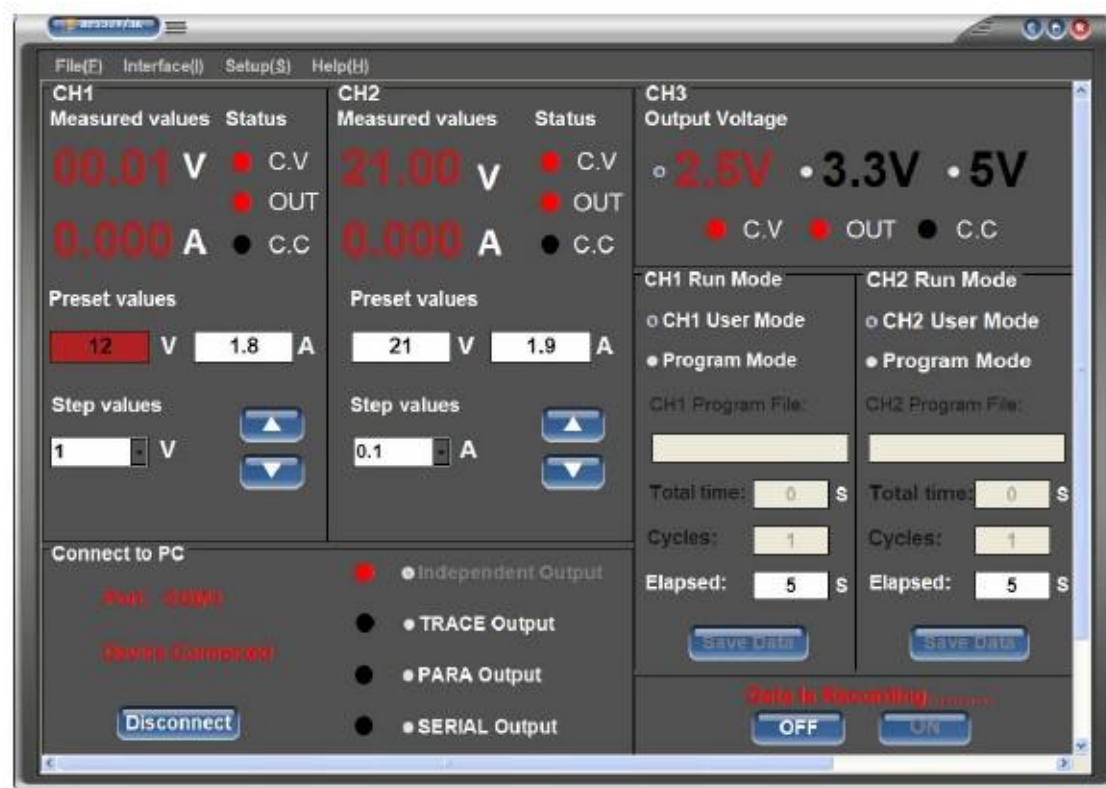


figure 30
Independent output

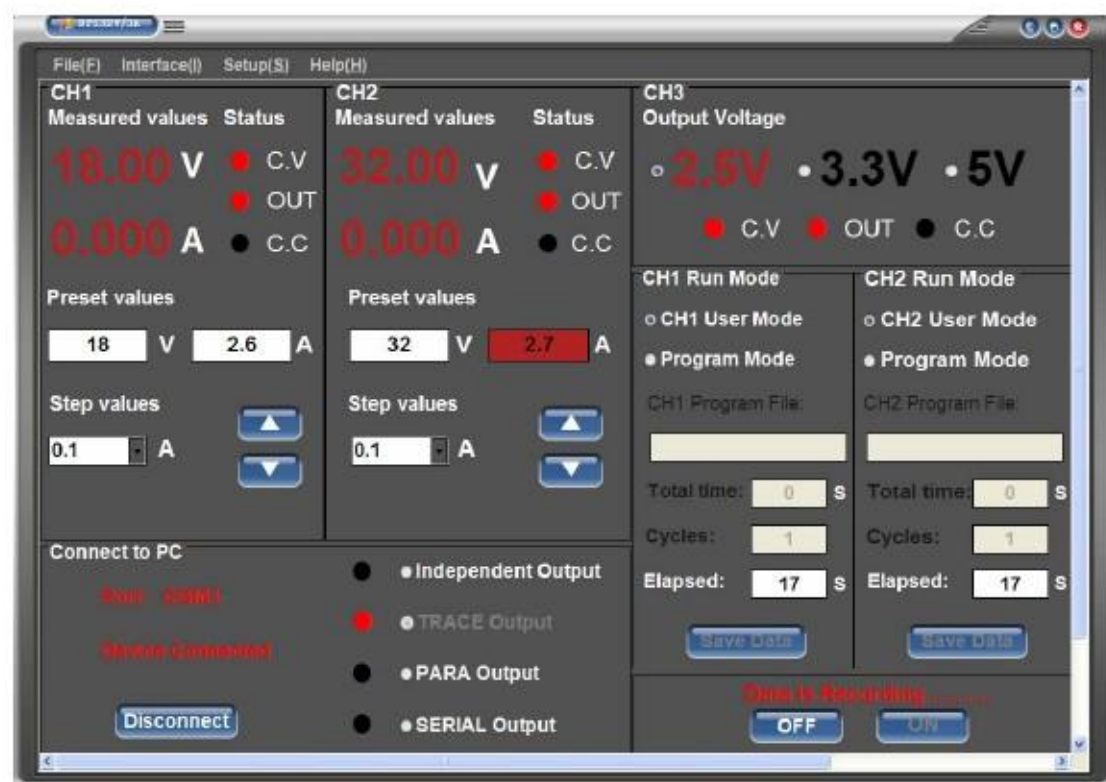


figure 31
Trace output

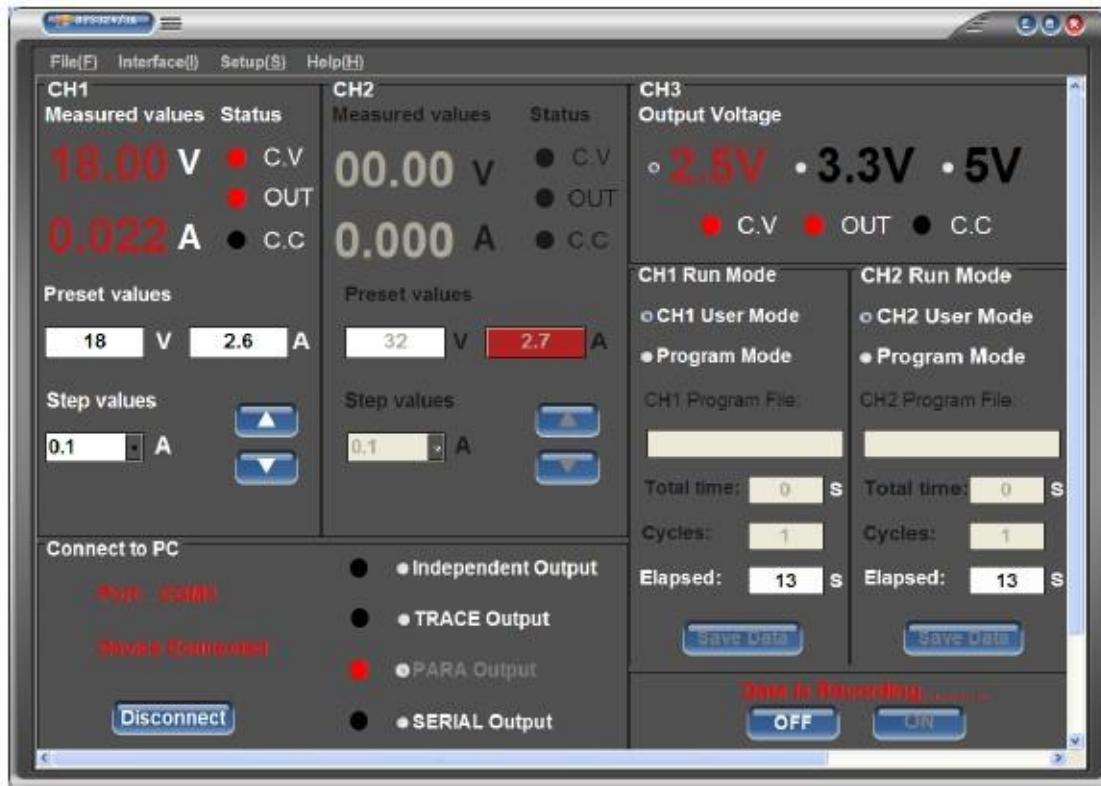


figure 32
Parallel output

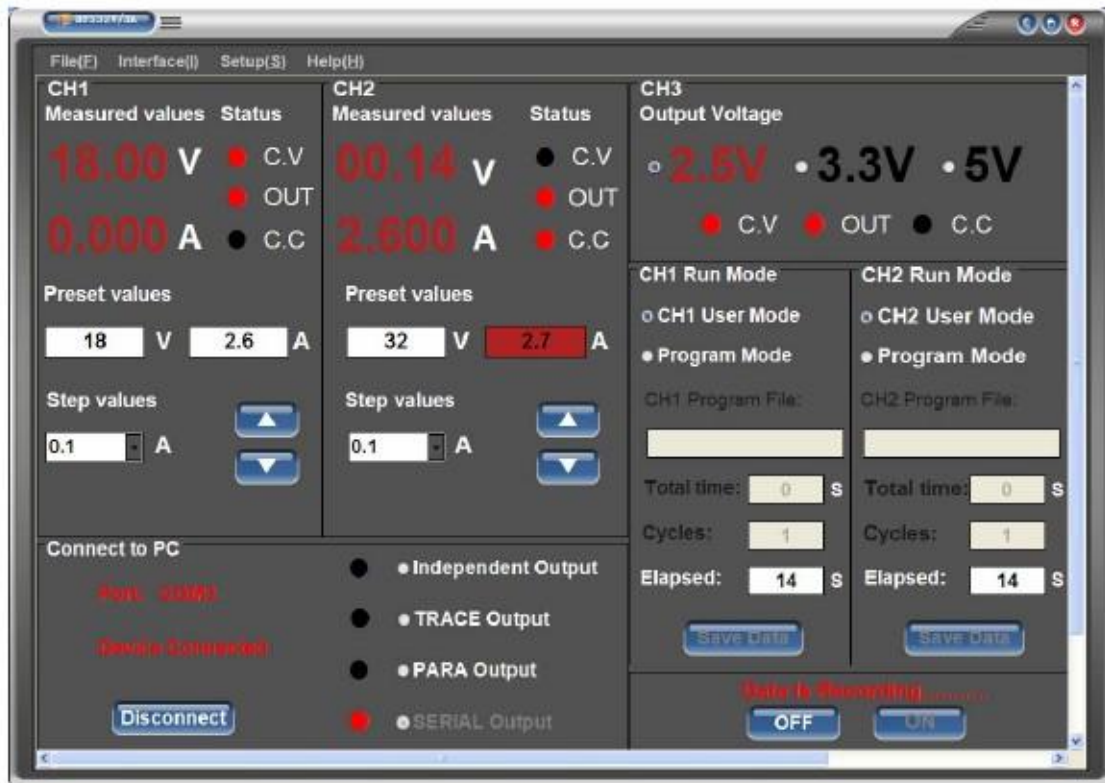


figure 33
Serial output

7、CH1 and CH2 channel operating mode choice, as shown in figure 34-35;

CH1 Run Mode	CH2 Run Mode
<input type="radio"/> CH1 User Mode <input checked="" type="radio"/> Program Mode	<input type="radio"/> CH2 User Mode <input checked="" type="radio"/> Program Mode
CH1 Program File:	CH2 Program File:
<input type="text"/>	<input type="text"/>
Total time: <input type="text" value="0"/> s	Total time: <input type="text" value="0"/> s
Cycles: <input type="text" value="1"/>	Cycles: <input type="text" value="1"/>
Elapsed: <input type="text" value="3"/> s	Elapsed: <input type="text" value="3"/> s
<input type="button" value="Save Data"/>	<input type="button" value="Save Data"/>

figure 34

CH1 Running mode

figure 35

CH2 Running mode

●CH1 channel the default mode for the user (the user directly click ON the button output current default values),Click the button to select the programming mode, as shown in figure 36 and 37;



figure 36

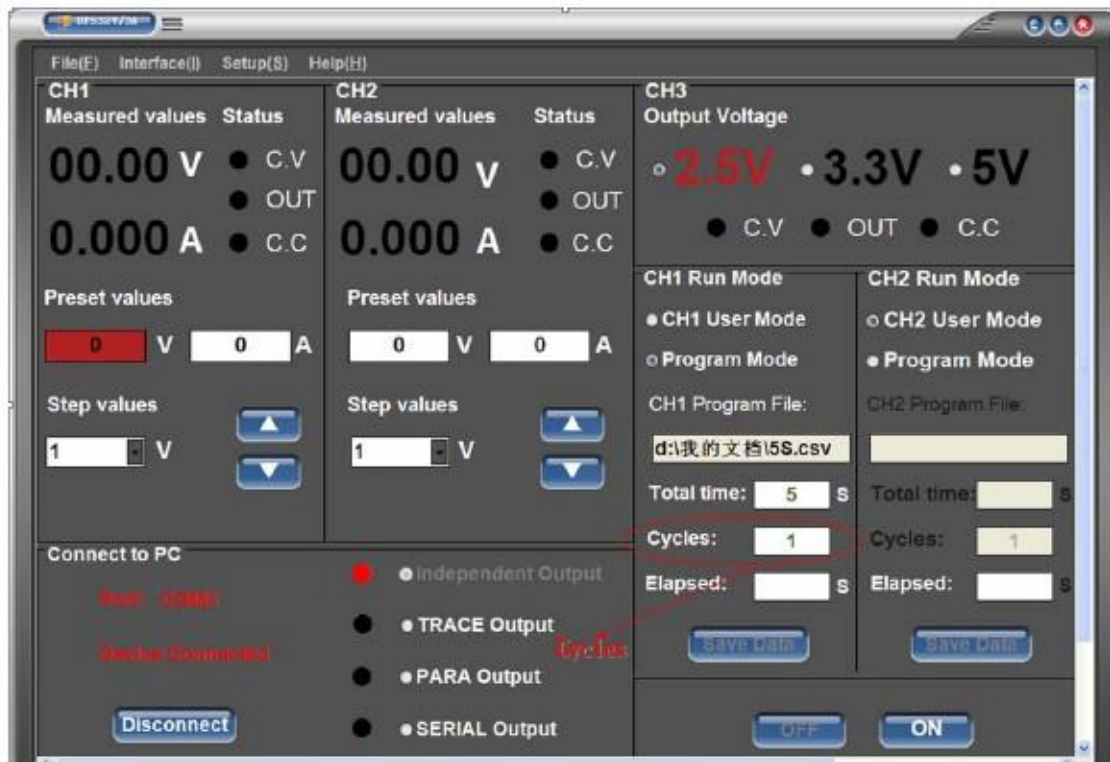


figure 37

Can modify Cycles (according to the need can write Cycles in the input box on the right side of the Cycles).

●CH2 channel the default mode for the user (the user directly click ON the button output current default values),Click the button to select the programming mode, as shown in figure 38 and 39;



figure 38

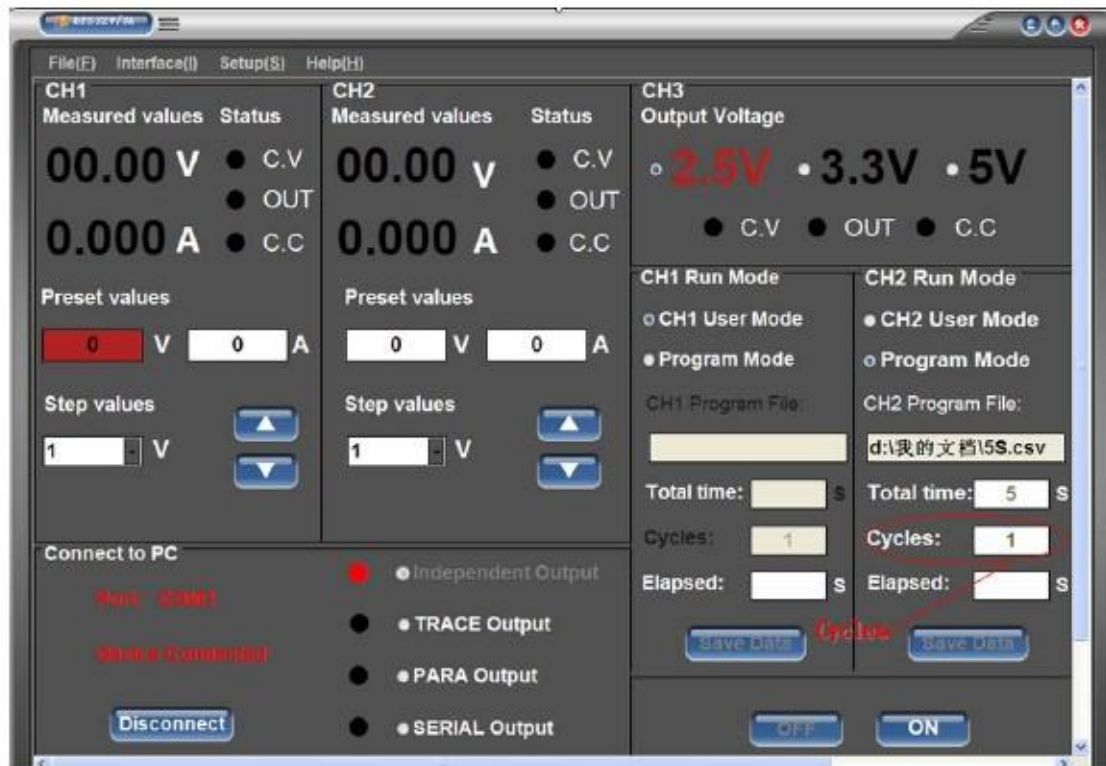


figure 39

● Programming mode, select the program file after you click ON the button run programming file data; After the completion of the run ,Run automatically end, click the Save Data button to Save Data to a CSV file as shown in figure 40 and 42

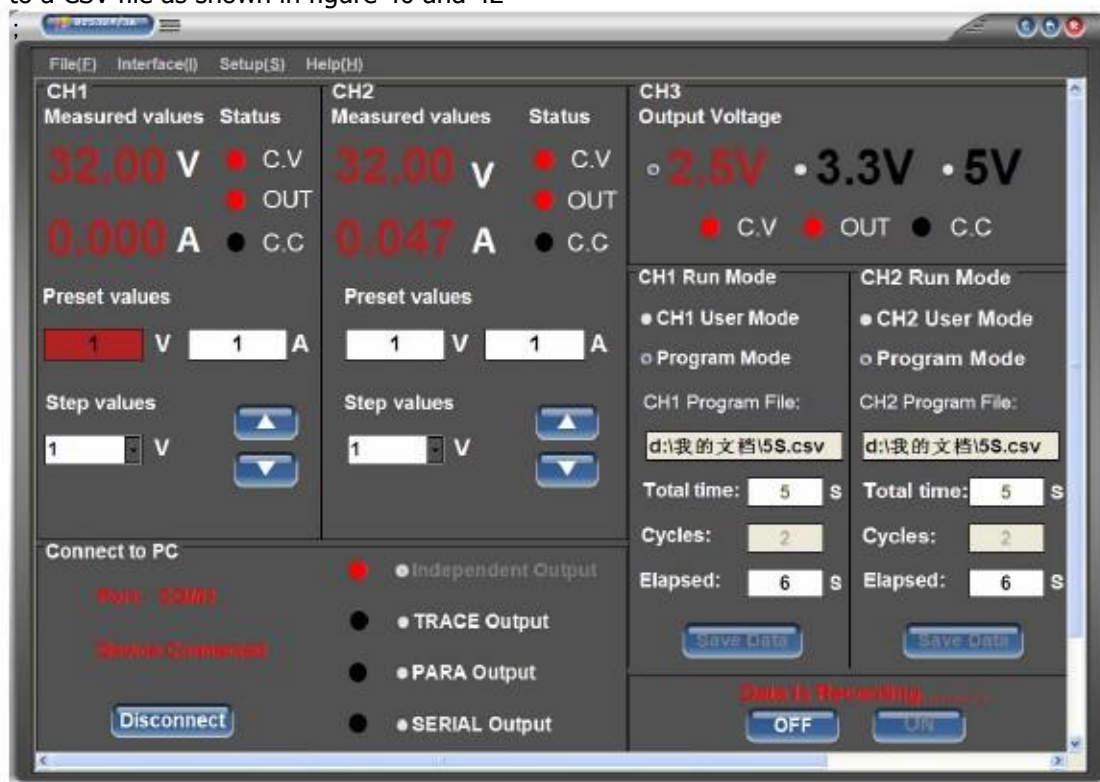


figure 40



figure 41

Microsoft Excel - chlr

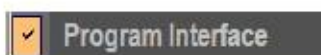
文件(F) 编辑(E) 视图(V) 插入(I) 格式(O) 工具(T) 数据(D) 窗口(W) 帮助(H)

	A	B	C	D	E	F	G
	Time(S)	Voltage(V)	Current (A)				
1	Time(S)	Voltage(V)	Current (A)				
2	0	1	0				
3	1	0	0				
4	2	1	0				
5	3	1	0				
6	4	1	0				
7	5	1	0				
8	6	32	0.015				
9	7	1	0				
10	8	1	0				
11	9	1	0				
12	10	1	0				
13							
14							

figure 42

2.1.2 DPS The software programming interface to use

1、Click Interface(I) menu



To enter programming interface (defaults to CH1, Click the SET CH1 or SET CH2 button can choose action object), as shown in figure 43

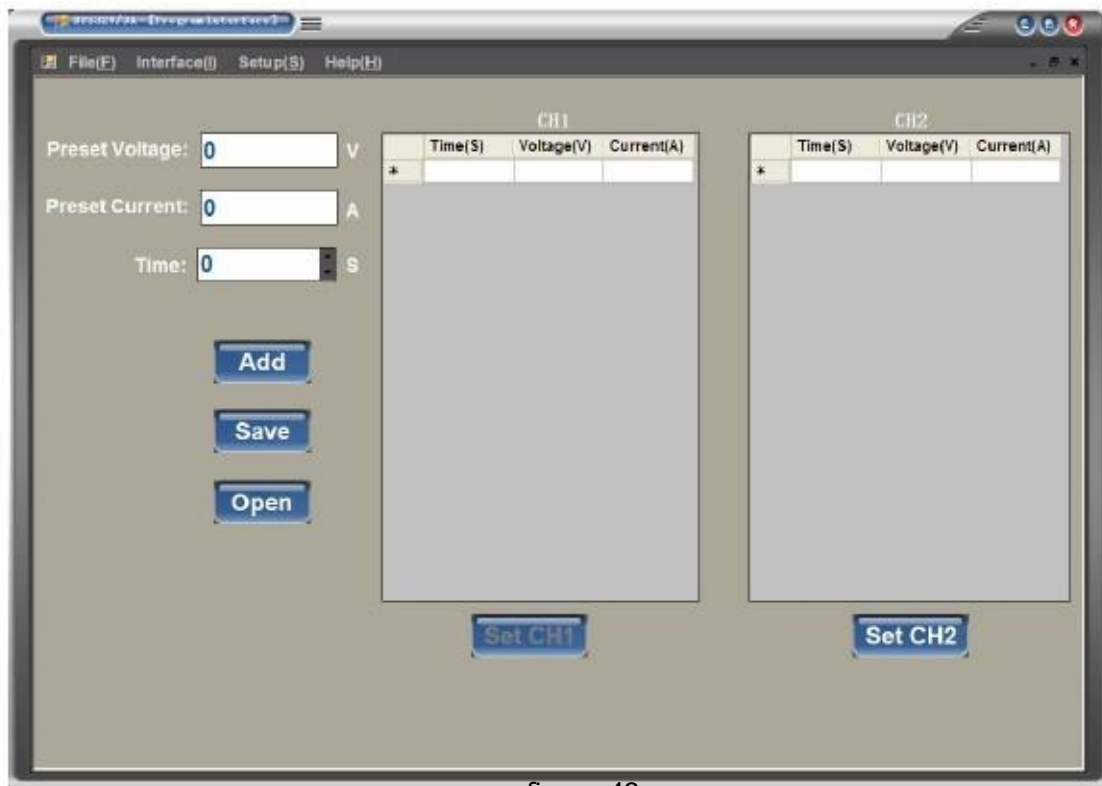


figure 43

- According to the need to enter a default value, click the ADD button to ADD data to the right of the table, and, as shown in figure 44.

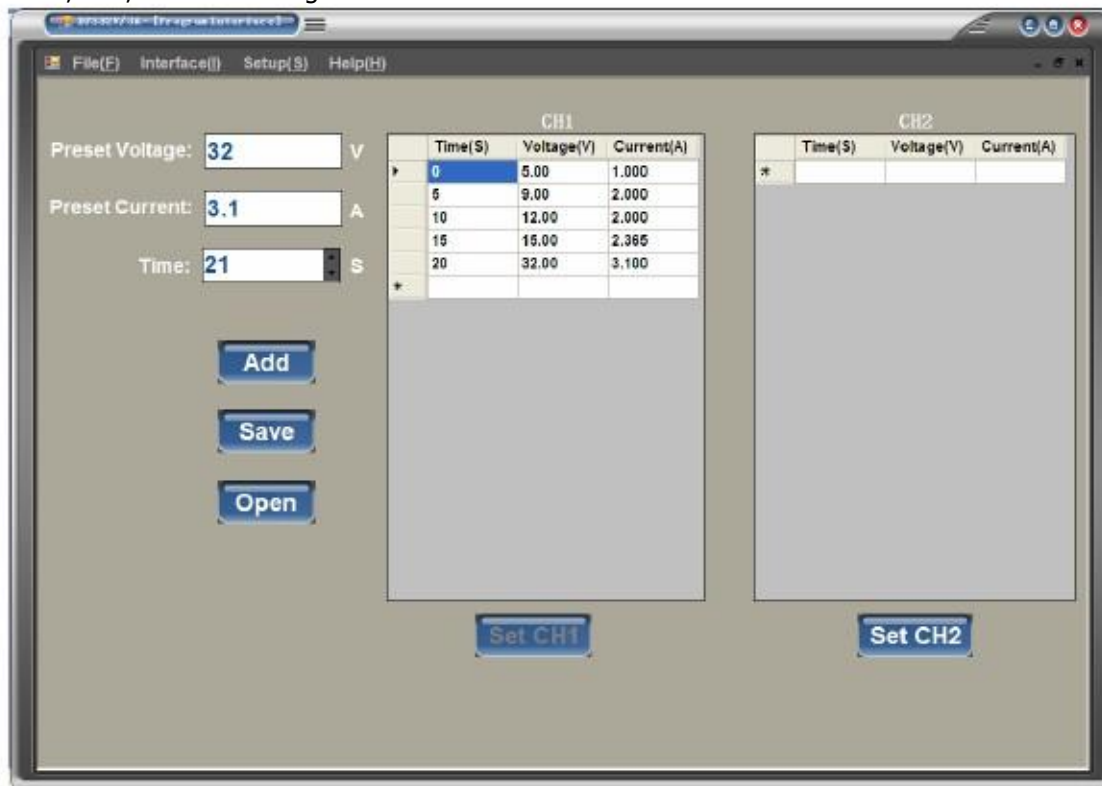


figure 44

- Save the data to a CSV file, as shown in figure 45-46;



figure 45

Microsoft Excel - 20r

文件(F) 编辑(E) 视图(V) 插入(I) 格式(O) 工具(T) 数据(D) 窗口(W) 帮助(H)

Time(S)

	A	B	C	D	E	F	G
1	Time(S)	Voltage(V)	Current (A)				
2	0	5	1				
3	5	9	2				
4	10	12	2				
5	15	15	2.365				
6	20	32	3.1				
7							
8							
9							
10							
11							
12							

figure 46

- Click Open button to Open a programming. As shown in figure 47-48;

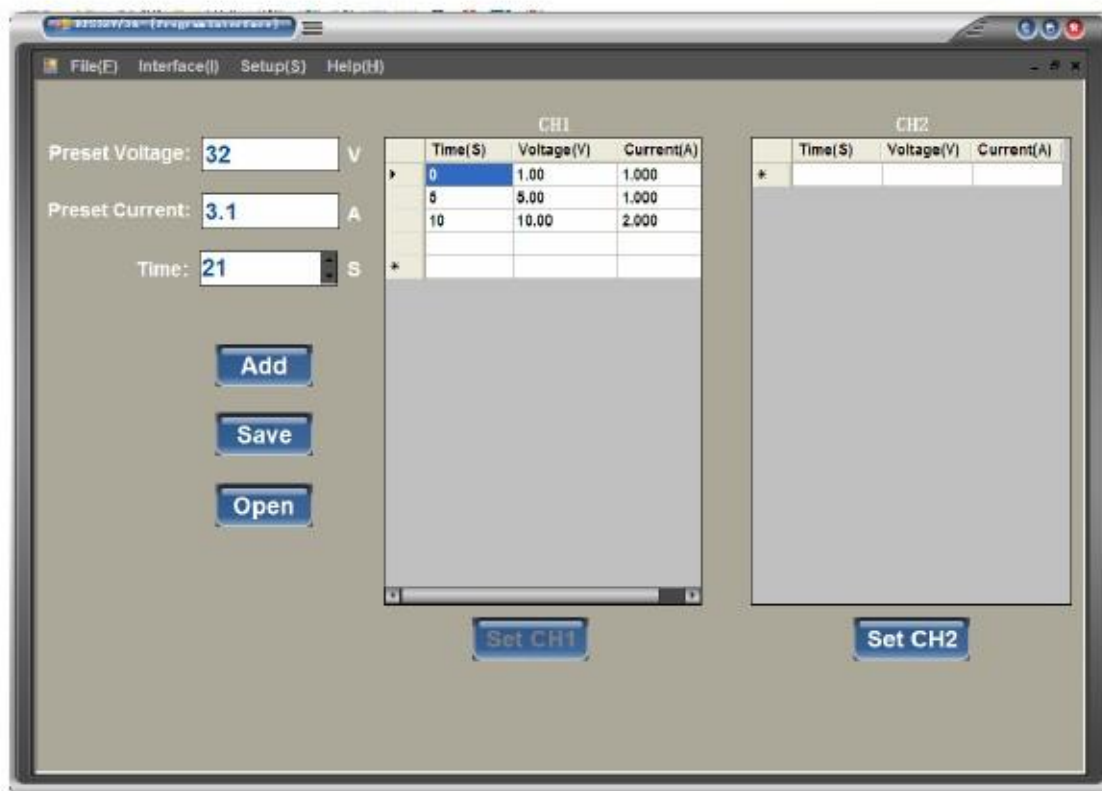


figure 47

● Click the right mouse button above in the table, select the delete option,. As shown in figure 48.

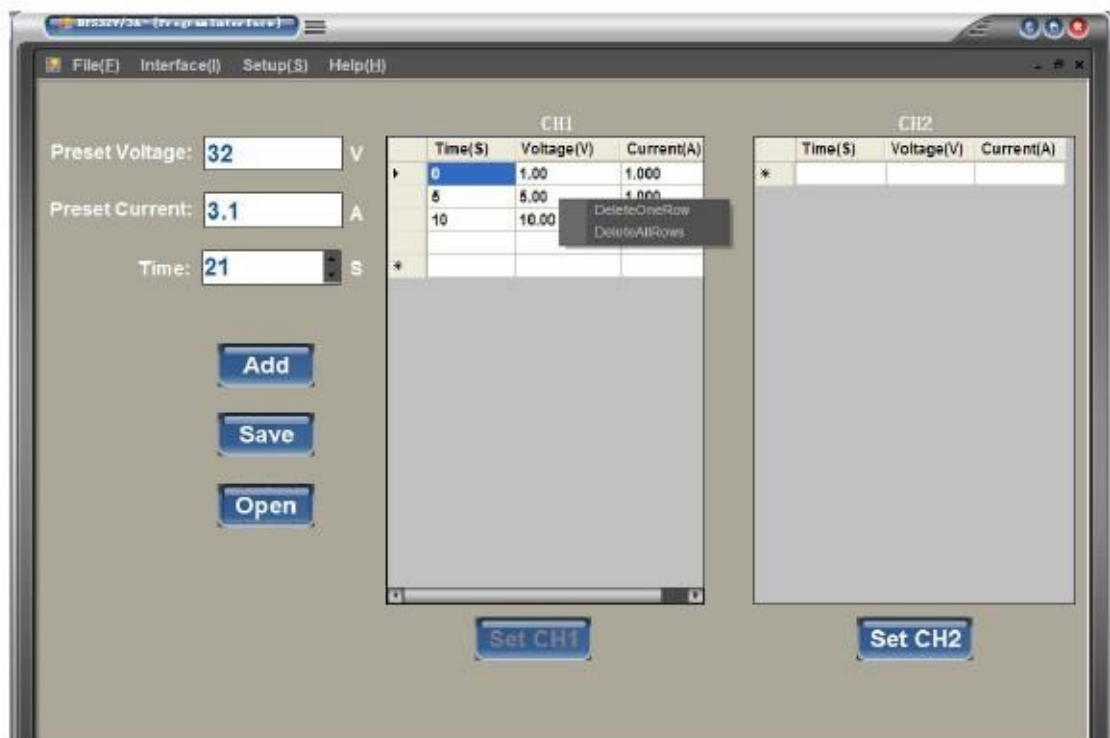


figure 48

